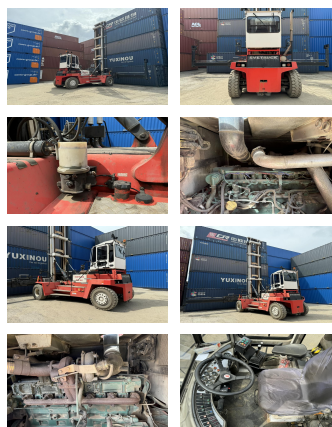


## Svetruck ECS6H

**Capacity:** 9000 kg  
**Year:** 2009  
**Hours:** 20500  
**Engine:** 6 Zyl. Volvo TAD750VE  
**Boom:** Standard  
**Lift height:** 15500 mm  
**Build height:** 10250 mm

**Commission Nr.:** DK224  
**Tires front:** 4 x Pneumatic tires (20 - 40%)  
**Tires rear:** 2 x Pneumatic tires (40 - 60%)  
**Opt. condition:** good  
**Techn. condition:** good  
**Price:** **0 EUR**



**Add. equipment and attachments:**

Side Shift,  
Full cabin,

Central lubrication

**Description:**

Centrallubrication, Video 2 years old

**Video:**

[www.youtube.com/embed//RDxR0IDTbLU](http://www.youtube.com/embed//RDxR0IDTbLU)

**Lift height number of containers:**

6

**BANKEN:** KSK Syke  
DLB Oldenburg  
Deutsche Bank Bremen

BLZ 291 517 00  
BLZ 280 200 50  
BLZ 290 700 50

KTO-Nr: 113 00 11 77 6  
KTO-Nr: 130 00 211 00  
KTO-Nr: 45 11 119 00

IBAN DE 66 291 517 00 113 00 11 77 6  
IBAN DE 58 280 200 50 130 00 211 00  
IBAN DE 75 290 700 50 045 11 119 00

SWIFT-BIC BRLADE21Syk  
SWIFT-BIC OLBODE H2  
SWIFT-BIC DEUTDE33XXX