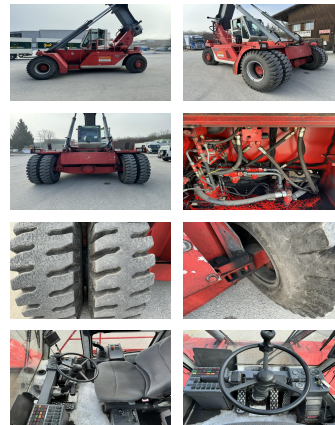


CVS Ferrari F158

Capacity: 8000 kg
Year: 1997
Hours: 26050
Engine: 6 Zyl. Volvo
Boom: Teleskop
Lift height: 13800 mm
Build height: 4050 mm

Commission Nr.: DK223
Tires front: 4 x Pneumatic tires (60 - 80%)
Tires rear: 2 x Pneumatic tires (20 - 40%)
Opt. condition: good
Techn. condition: good
Price: **0 EUR**



Add. equipment and attachments: Side Shift, Spotlight front, Heater,

Description: 5 x 8'6" 4 x 9'6"

Video: www.youtube.com/embed//hjwE8pzPFbw

Lift height number of containers: 5

Capacity 1st row: 8000 kg

Capacity 2nd row: 7000 kg

Capacity 3rd row: 5000 kg

BANKEN: KSK Syke
 OLB Oldenburg
 Deutsche Bank Bremen

BLZ 291 517 00
 BLZ 280 200 50
 BLZ 290 700 50

KTO-Nr: 113 00 11 77 6
 KTO-Nr: 130 00 211 00
 KTO-Nr: 45 11 119 00

IBAN DE 66 291 517 00 113 00 11 77 6
 IBAN DE 58 280 200 50 130 00 211 00
 IBAN DE 75 290 700 50 045 11 119 00

SWIFT-BIC: BRLADE21Syk
 SWIFT-BIC: OLBODE H2
 SWIFT-BIC: DEUTDE33XXX