

Hinrichs Flurfördergeräte · Fuldastraße 32 · 26135 Oldenburg

Fuldastraße 32 • 26135 Oldenburg, Germany

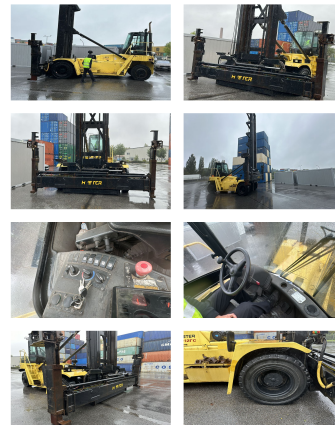
Telefon +49 (0)441 950 64 110 info@hinrichs-stapler.de

Telefax +49 (0)441 950 64 119 www.hinrichs-stapler.de

Hyster H22XM-12EC

Capacity: 9000 kg
Year: 2012
Hours: 12500
Engine: Cummins QSB 6,7
Boom: Standard
Lift height: 16450 mm
Build height: 10760 mm

Commission Nr.: DK219
Tires front: 4 x Pneumatic tires (40 - 60%)
Tires rear: 2 x Pneumatic tires (40 - 60%)
Opt. condition: good
Techn. condition: good
Price: **0 EUR**



Add. equipment and attachments:

Side Shift, Spotlight rear, Spotlight front, Heater, Full cabin,

Video:

www.youtube.com/embed//nb2vzQsourU

Lift height number of containers:

7

BANKEN: KSK Syke
OLB Oldenburg
Deutsche Bank Bremen

BLZ 291 517 00
BLZ 280 200 50
BLZ 290 700 50

KTO-Nr. 113 00 11 77 6
KTO-Nr. 130 00 211 00
KTO-Nr. 45 11 119 00

IBAN DE 66 291 517 00 113 00 11 77 6
IBAN DE 58 280 200 50 130 00 211 00
IBAN DE 75 290 700 50 045 11 119 00

SWIFT-BIC BRLADE21Syk
SWIFT-BIC OLBODE H2
SWIFT-BIC DEUTDE33XXX