

[Hinrichs Flurfördergeräte · Fuldastraße 32 · 26135 Oldenburg](#)

Fuldastraße 32 • 26135 Oldenburg, Germany

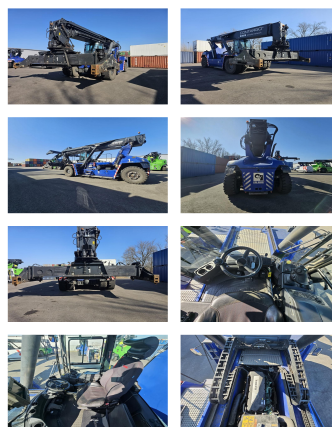
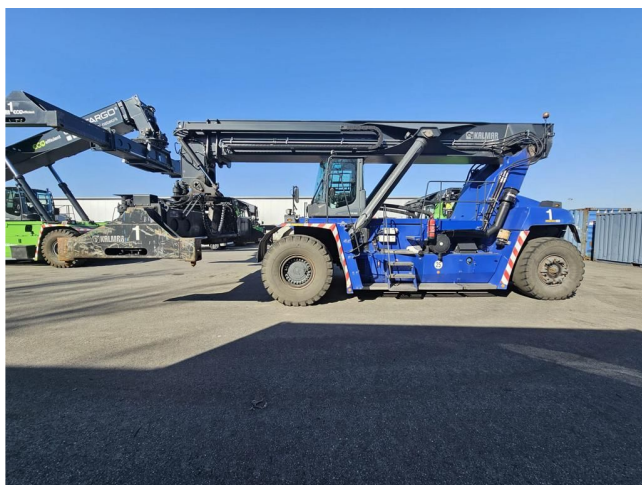
Telefon +49 (0)441 950 64 110 info@hinrichs-stapler.de

Telefax +49 (0)441 950 64 119 www.hinrichs-stapler.de

Kalmar DRG420-60S5

Capacity: 42000 kg
Year: 2020
Hours: 15564
Engine: 6 Cyl. Volvo TAD 1171VE
Boom: Teleskop
Lift height: 15100 mm
Build height: 4600 mm

Commission Nr.: D4146
Tires front: 4 x Pneumatic tires (40 - 60%)
Tires rear: 2 x Pneumatic tires (40 - 60%)
Opt. condition: good
Techn. condition: good
Price: **0 EUR**



Add. equipment and attachments:

Side Shift,
Full cabin, Air conditioning,

Description:

Central lubrication, Camera 30° auto stop Air condition
good running and working condition.

Lift height number of containers:

5

Capacity 1st row:

42000 kg

Capacity 2nd row:

25000 kg

Capacity 3rd row:

12000 kg

BANKEN: KSK Syke
DLB Oldenburg
Deutsche Bank Bremen

BLZ 291 517 00
BLZ 280 200 50
BLZ 290 700 50

KTO-Nr: 113 00 11 77 6
KTO-Nr: 130 00 211 00
KTO-Nr: 45 11 119 00

IBAN DE 66 291 517 00 113 00 11 77 6
IBAN DE 58 280 200 50 130 00 211 00
IBAN DE 75 290 700 50 045 11 119 00

SWIFT-BIC BRLADE21Syk
SWIFT-BIC OLBODE H2
SWIFT-BIC DEUTDE33XXX