

Fuldastraße 32 • 26135 Oldenburg, Germany

Telefon +49 (0)441 950 64 110 info@hinrichs-stapler.de

Telefax +49 (0)441 950 64 119 www.hinrichs-stapler.de

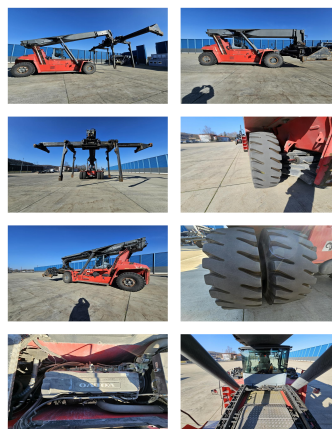
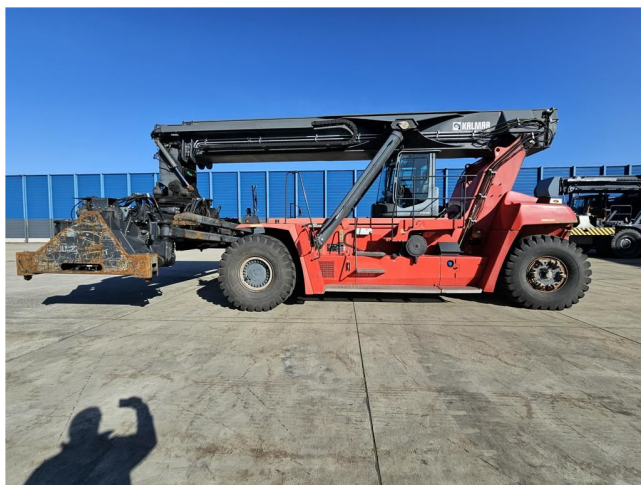
Hinrichs Flurfördergeräte • Fuldastraße 32 • 26135 Oldenburg

Kalmar DRG450-60C5

Capacity: 45000 kg
Year: 2016
Hours: 25000
Engine: 6 Cyl. Volvo TAD1171VE
Boom: Teleskop
Lift height: 15200 mm
Build height: 4700 mm

Commission Nr.: D4140
Tires front: 4 x Pneumatic tires (60 - 80%)
Tires rear: 2 x Pneumatic tires (40 - 60%)
Ont. condition: good
Technical condition: good

Rental Rates:



Add. equipment and attachments:

Side Shift,
Heater, Full cabin, Air conditioning,

Piggy Back movable cabin central lubrication pile slope Camera

Description:

Video:

www.youtube.com/embed//RzU1h0s-NvI

Lift height number of containers:

5

Capacity 1st row:

45000 kg

Capacity 2nd row:

25000 kg

Capacity 3rd row:

12000 kg

BANKEN: KSK Syke
OLB Oldenburg
Deutsche Bank Bremen

BLZ 291 517 00
BLZ 280 200 50
BLZ 290 700 50

KTO-Nr. 113 00 11 77 6
KTO-Nr. 130 00 211 00
KTO-Nr. 45 11 119 00

IBAN DE 66 291 517 00 113 00 11 77 6
IBAN DE 38 280 200 50 130 00 211 00
IBAN DE 75 290 700 50 045 11 119 00

SWIFT-BIC BRLADE21Syk
SWIFT-BIC OLBODE H2
SWIFT-BIC DEUTDE33XXX