

Fuldastraße 32 • 26135 Oldenburg, Germany

Telefon +49 (0)441 950 64 110 info@hinrichs-stackler.de

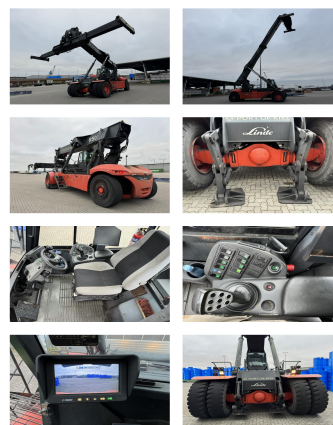
Telefax +49 (0)441 950 64 119 www.hinrichs-stackler.de

Hinrichs Flurfördergeräte • Fuldastraße 32 • 26135 Oldenburg

## Linde C4540TL

**Capacity:** 45000 kg  
**Year:** 2010  
**Hours:** 5610  
**Engine:** 6 Zyl. Scania  
**Boom:** Teleskop  
**Lift height:** 16000 mm  
**Build height:** 5220 mm

**Commission Nr.:** D4126  
**Tires front:** 4 x Pneumatic tires (0 - 20%)  
**Tires rear:** 2 x Pneumatic tires (40 - 60%)  
**Opt. condition:** good  
**Techn. condition:** good  
**Price:** **0 EUR**



### Add. equipment and attachments:

Spotlight rear, Spotlight front, Heater, Full cabin,

with 20-40' Spreader Rückfahrkamera / rear view camera, hydr. elektr. Kabineverschiebung / hydr. electr. movable cabine,

### Description:

with extra Support for long distance handling

### Video:

[www.youtube.com/embed//9EwkVFuH\\_AM](http://www.youtube.com/embed//9EwkVFuH_AM)

**Lift height number of containers:**

6

**Capacity 1st row:**

45000 kg

**Capacity 2nd row:**

45000 kg

**Capacity 3rd row:**

31000 kg

**BANKEN:** KSK Syke  
DLB Oldenburg  
Deutsche Bank Bremen

BLZ 291 517 00  
BLZ 280 200 50  
BLZ 290 700 50

KTO-Nr: 113 00 11 77 6  
KTO-Nr: 130 00 211 00  
KTO-Nr: 45 11 119 00

IBAN DE 66 291 517 00 113 00 11 77 6  
IBAN DE 58 280 200 50 130 00 211 00  
IBAN DE 75 290 700 50 045 11 119 00

SWIFT-BIC: BRLADE215yk  
SWIFT-BIC: OLBODE H2  
SWIFT-BIC: DEUTDE33XXX