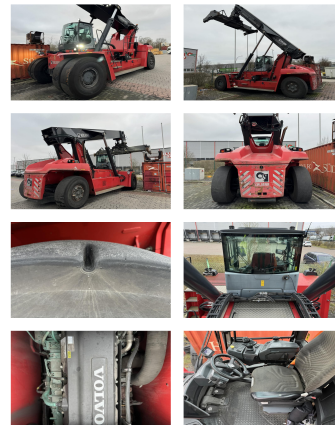


Kalmar DRG450-65S5

Capacity: 45000 kg
Year: 2018
Hours: 13900
Engine: 6 Cyl. Volvo TAD1171VE
Boom: Teleskop
Lift height: 15200 mm
Build height: 4700 mm

Commission Nr.: D4123
Tires front: 4 x Pneumatic tires (40 - 60%)
Tires rear: 2 x Pneumatic tires (40 - 60%)
Opt. condition: good
Techn. condition: good
Price: **0 EUR**



Add. equipment and attachments:

Side Shift,
Heater, Full cabin, Air conditioning,

movable cabin central lubrication camera 30' stop Tamtron Solas scale

Description:

good running and working condition.

Lift height number of containers: 5
Capacity 1st row: 45000 kg
Capacity 2nd row: 32000 kg
Capacity 3rd row: 16000 kg

BANKEN: KSK Syke
DLB Oldenburg
Deutsche Bank Bremen

BLZ 291 517 00
BLZ 280 200 50
BLZ 290 700 50

KTO-Nr: 113 00 11 77 6
KTO-Nr: 130 00 211 00
KTO-Nr: 45 11 119 00

IBAN DE 66 291 517 00 113 00 11 77 6
IBAN DE 58 280 200 50 130 00 211 00
IBAN DE 75 290 700 50 045 11 119 00

SWIFT-BIC BRLADE215yk
SWIFT-BIC OLBODE H2
SWIFT-BIC DEUTDE33XXX