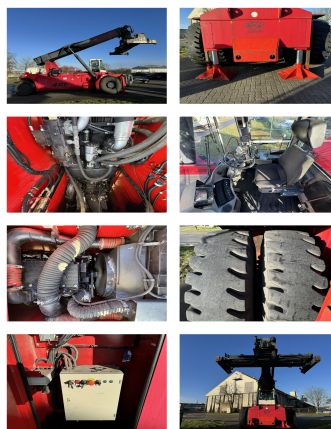


## CVS Ferrari F481

**Capacity:** 45000 kg  
**Year:** 2009  
**Hours:** 11155  
**Engine:** Cummins QSM11  
**Boom:** Teleskop  
**Lift height:** 16060 mm  
**Build height:** 4920 mm

**Commission Nr.:** D4117  
**Tires front:** 4 x Pneumatic tires (60 - 80%)  
**Tires rear:** 2 x Pneumatic tires (20 - 40%)  
**Ont. condition:** good  
**Technical condition:** good

## Rental Rates:



**Add. equipment and attachments:**

Side Shift,  
Heater, Full cabin, Air conditioning,

**Description:**

Stabilization, Air Conditioner, Central Lubrication, Heating, Scale

**Video:**

[www.youtube.com/embed//p8ZjXmPddII](http://www.youtube.com/embed//p8ZjXmPddII)

**Lift height number of containers:**

6

**Capacity 1st row:**

45000 kg

**Capacity 2nd row:**

45000 kg

**Capacity 3rd row:**

34000 kg

**BANKEN:** KSK Syke  
DLB Oldenburg  
Deutsche Bank Bremen

BLZ 291 517 00  
BLZ 280 200 50  
BLZ 290 700 50

KTO-Nr: 113 00 11 77 6  
KTO-Nr: 130 00 211 00  
KTO-Nr: 45 11 119 00

IBAN DE 66 291 517 00 113 00 11 77 6  
IBAN DE 58 280 200 50 130 00 211 00  
IBAN DE 75 290 700 50 045 11 119 00

SWIFT-BIC BRLADE215yk  
SWIFT-BIC OLBODE H2  
SWIFT-BIC DEUTDE33XXX