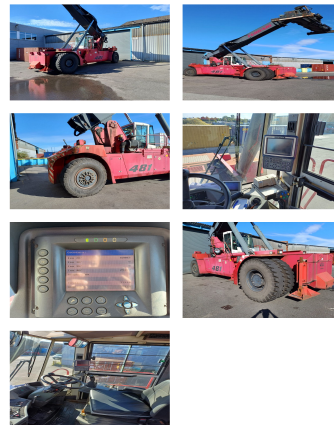


CVS Ferrari F481

Capacity: 45000 kg
Year: 2009
Hours: 11025
Engine: Cummins QSM11
Boom: Teleskop
Lift height: 16060 mm
Build height: 4920 mm

Commission Nr.: D4117
Tires front: 4 x Pneumatic tires (80 - 100%)
Tires rear: 2 x Pneumatic tires (20 - 40%)
Opt. condition: good
Techn. condition: good
Price: **0 EUR**



Add. equipment and attachments:

Side Shift,
Heater, Full cabin, Air conditioning,

Description:

Stabilization, Air Conditioner, Central Lubrication, Heating

Lift height number of containers:

5

Capacity 1st row:

45000 kg

Capacity 2nd row:

45000 kg

Capacity 3rd row:

36000 kg

BANKEN: KSK Syke
DLB Oldenburg
Deutsche Bank Bremen

BLZ 291 517 00
BLZ 280 200 50
BLZ 290 700 50

KTO-Nr: 113 00 11 77 6
KTO-Nr: 130 00 211 00
KTO-Nr: 45 11 119 00

IBAN DE 66 291 517 00 113 00 11 77 6
IBAN DE 58 280 200 50 130 00 211 00
IBAN DE 75 290 700 50 045 11 119 00

SWIFT-BIC BRLADE21Syk
SWIFT-BIC DLBODE H2
SWIFT-BIC DEUTDE33XXX