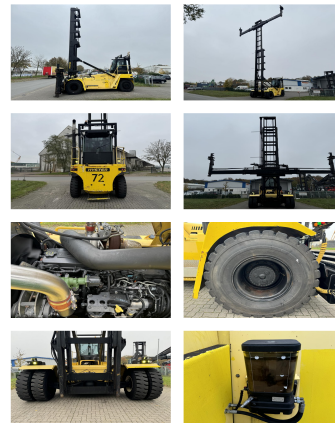


## Hyster H23XM-12EC

**Capacity:** 10000 kg  
**Year:** 2017  
**Hours:** 13825  
**Engine:** Cummins QSB 6,7 Tier IV  
**Boom:** Standard  
**Lift height:** 18880 mm  
**Build height:** 10710 mm

**Commission Nr.:** D4114  
**Tires front:** 4 x Super Elastic (80 - 100%)  
**Tires rear:** 2 x Super Elastic (40 - 60%)  
**Opt. condition:** good  
**Techn. condition:** good  
**Price:** **0 EUR**



**Add. equipment and attachments:**

Side Shift, Spotlight rear, Spotlight front, Heater, Full cabin,

20/40 hydr. Spreader, Central lubrication

**Description:**

good running condition.

**Video:**

[www.youtube.com/embed//SnIGZ0g\\_5v8](http://www.youtube.com/embed//SnIGZ0g_5v8)

**Lift height number of containers:**

8

BANKEN: KSK Syke  
OLB Oldenburg  
Deutsche Bank Bremen

BLZ 291 517 00  
BLZ 280 200 50  
BLZ 290 700 50

KTO-Nr. 113 00 11 77 6  
KTO-Nr. 130 00 211 00  
KTO-Nr. 45 11 119 00

IBAN DE 66 291 517 00 113 00 11 77 6  
IBAN DE 58 280 200 50 130 00 211 00  
IBAN DE 75 290 700 50 045 11 119 00

SWIFT-BIC BRLADE21Syk  
SWIFT-BIC OLBODE H2  
SWIFT-BIC DEUTDE33XXX