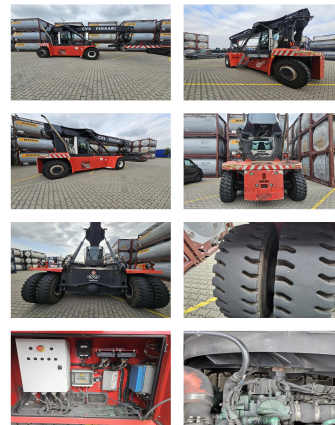


CVS Ferrari F500RSE

Capacity: 12000 kg
Year: 2019
Hours: 11700
Engine: Volvo TAD871VE Tier IV
Boom: Teleskop
Lift height: 15870 mm
Build height: 4275 mm

Commission Nr.: D4112
Tires front: 4 x Pneumatic tires (40 - 60%)
Tires rear: 2 x Pneumatic tires (40 - 60%)
Opt. condition: good
Techn. condition: good
Price: **0 EUR**



Add. equipment and attachments:

camera central lubrication Air suspended seat Air condition
 20'30'40'45' Container handling

Description:

very good running and working condition

Lift height number of containers: 6
Capacity 1st row: 12000 kg
Capacity 2nd row: 10000 kg
Capacity 3rd row: 5000 kg

BANKEN: KSK Syke
 OLB Oldenburg
 Deutsche Bank Bremen

BLZ 291 517 00
 BLZ 280 200 50
 BLZ 290 700 50

KTO-Nr: 113 00 11 77 6
 KTO-Nr: 130 00 211 00
 KTO-Nr: 45 11 119 00

IBAN DE 66 291 517 00 113 00 11 77 6
 IBAN DE 58 280 200 50 130 00 211 00
 IBAN DE 75 290 700 50 045 11 119 00

SWIFT-BIC BRLAE215yk
 SWIFT-BIC OLBODE H2
 SWIFT-BIC DEUTDE33XXX