

Hinrichs Flurfördergeräte · Fuldastraße 32 · 26135 Oldenburg

Fuldastraße 32 · 26135 Oldenburg, Germany

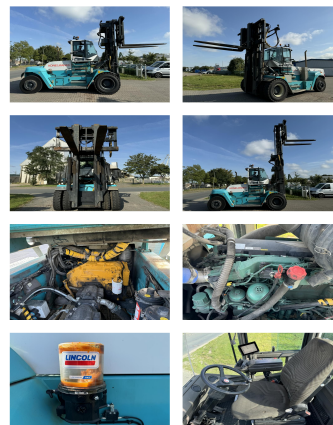
Telefon +49 (0)441 950 64 110 info@hinrichs-stapler.de

Telefax +49 (0)441 950 64 119 www.hinrichs-stapler.de

SMV 20-1200C

Capacity: 20000 kg
Year: 2018
Hours: 17465
Engine: Volvo TAD871VE (Tier IV)
Boom: Duplex
Lift height: 6500 mm
Build height: 5060 mm
Freelift: 3250 mm

Commission Nr.: D4106
Tires front: 4 x Pneumatic tires (40 - 60%)
Tires rear: 4 x Super Elastic (20 - 40%)
Opt. condition: good
Techn. condition: good
Price: **0 EUR**



Add. equipment and attachments:

Side Shift, Fork positioners,
3rd valve, 4th valve, Spotlight front, Heater, Full cabin,
central lubrication/ Zentralschmierung Camera ELME 508
Headsreader movable cabin (Forx 2,40 m available)

Description:

Headsreader

Video:

www.youtube.com/embed//dsjzHCgTSyU

Lift height number of containers:

3

BANKEN: KSK Syke
OLB Oldenburg
Deutsche Bank Bremen

BLZ 291 517 00
BLZ 280 200 50
BLZ 290 700 50

KTO-Nr: 113 00 11 77 6
KTO-Nr: 130 00 211 00
KTO-Nr: 45 11 119 00

IBAN DE 66 291 517 00 113 00 11 77 6
IBAN DE 58 280 200 50 130 00 211 00
IBAN DE 75 290 700 50 045 11 119 00

SWIFT-BIC BRLADE21Syk
SWIFT-BIC OLBODE H2
SWIFT-BIC DEUTDE33XXX