

Fuldastraße 32 • 26135 Oldenburg, Germany

Telefon +49 (0)441 950 64 110 info@hinrichs-stapler.de

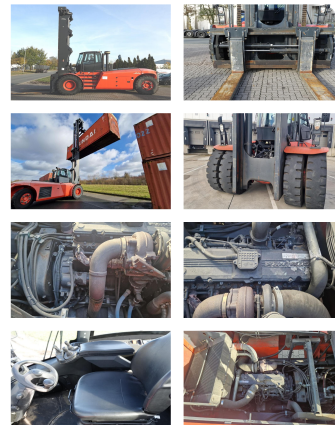
Telefax +49 (0)441 950 64 119 www.hinrichs-stapler.de

Hinrichs Flurfördergeräte • Fuldastraße 32 • 26135 Oldenburg

Linde H320

Capacity: 32000 kg
Year: 2013
Hours: 1329
Engine: Cummins QSC8.3
Boom: Standard
Lift height: 10000 mm
Build height: 6950 mm

Commission Nr.: D4102a
Forks: 2400 x 300 mm
Tires front: 4 x Pneumatic tires (60 - 80%)
Tires rear: 2 x Pneumatic tires (40 - 60%)
Opt. condition: very good
Techn. condition: very good
Price: **0 EUR**



Add. equipment and attachments:

Side Shift, Fork positioners,
 Heater, Full cabin,

ele. cabin lifting

Description:

electric cabin lifting Spreader Handling-Equipment 40' Spreader +
 18.000,00

Video:

www.youtube.com/embed//8OchstNA6paY

BANKEN: KSK Syke
 OLB Oldenburg
 Deutsche Bank Bremen

BLZ 291 517 00
 BLZ 280 200 50
 BLZ 290 700 50

KTO-Nr. 113 00 11 77 6
 KTO-Nr. 130 00 211 00
 KTO-Nr. 45 11 119 00

IBAN DE 66 291 517 00 113 00 11 77 6
 IBAN DE 58 280 200 50 130 00 211 00
 IBAN DE 75 290 700 50 045 11 119 00

SWIFT-BIC BRLADE21Syk
 SWIFT-BIC OLBODE H2
 SWIFT-BIC DEUTDE33XXX