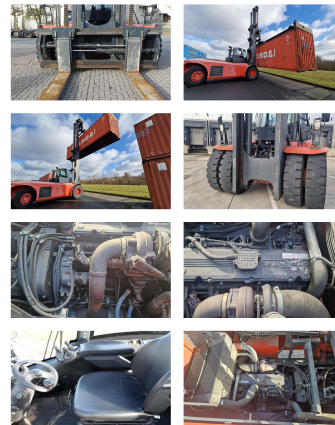


Linde H320

Capacity: 32000 kg
Year: 2013
Hours: 1329
Engine: Cummins QSC8.3
Boom: Standard
Lift height: 10000 mm
Build height: 6950 mm

Commission Nr.: D4102
Forks: 2400 x 300 mm
Tires front: 4 x Pneumatic tires (60 - 80%)
Tires rear: 2 x Pneumatic tires (40 - 60%)
Opt. condition: very good
Techn. condition: very good
Price: **0 EUR**



Add. equipment and attachments:

Side Shift, Fork positioners,
Heater, Full cabin,

ele. cabin lifting

Description:

electric cabin lifting Spreader Handling-Equipment 40' Spreader +
□ 18.000,00

Video:

www.youtube.com/embed//8OhstNA6paY

BANKEN: KSK Syke
OLB Oldenburg
Deutsche Bank Bremen

BLZ 291 517 00
BLZ 280 200 50
BLZ 290 700 50

KTO-Nr. 113 00 11 77 6
KTO-Nr. 130 00 211 00
KTO-Nr. 45 11 119 00

IBAN DE 66 291 517 00 113 00 11 77 6
IBAN DE 58 280 200 50 130 00 211 00
IBAN DE 75 290 700 50 045 11 119 00

SWIFT-BIC BRLADE21Syk
SWIFT-BIC OLBODE H2
SWIFT-BIC DEUTDE33XXX