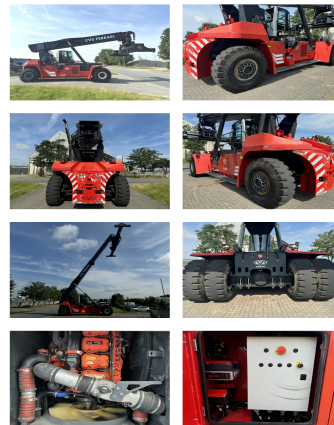


### CVS Ferrari F500RS3

**Capacity:** 46000 kg  
**Year:** 2017  
**Hours:** 15790  
**Engine:** Scania DC13 Tier IV  
**Boom:** Teleskop  
**Lift height:** 16100 mm  
**Build height:** 4800 mm

**Commission Nr.:** D4056  
**Tires front:** 4 x Pneumatic tires (60 - 80%)  
**Tires rear:** 2 x Pneumatic tires (40 - 60%)  
**Opt. condition:** good  
**Techn. condition:** good  
**Price:** **0 EUR**



**Add. equipment and attachments:**

Side Shift,  
Heater, Full cabin, Air conditioning,

Zentralschmierung = Centrallubrication Kamera = Camera

**Video:**

[www.youtube.com/embed//aUkdaqsnMmA](http://www.youtube.com/embed//aUkdaqsnMmA)

**Lift height number of containers:**

6

**Capacity 1st row:**

46000 kg

**Capacity 2nd row:**

33000 kg

**Capacity 3rd row:**

17000 kg

**BANKEN:** KSK Syke  
DLB Oldenburg  
Deutsche Bank Bremen

BLZ 291 517 00  
BLZ 280 200 50  
BLZ 290 700 50

KTO-Nr: 113 00 11 77 6  
KTO-Nr: 130 00 211 00  
KTO-Nr: 45 11 119 00

IBAN DE 66 291 517 00 113 00 11 77 6  
IBAN DE 58 280 200 50 130 00 211 00  
IBAN DE 75 290 700 50 045 11 119 00

SWIFT-BIC BRLAE215yk  
SWIFT-BIC OLBODE H2  
SWIFT-BIC DEUTDE33XXX