

Hinrichs Flurfördergeräte · Fuldastraße 32 · 26135 Oldenburg

Fuldastraße 32 • 26135 Oldenburg, Germany

Telefon +49 (0)441 950 64 110 info@hinrichs-stapler.de

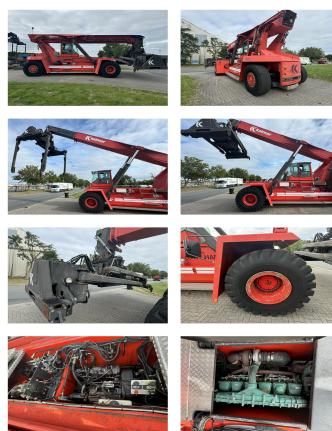
Telefax +49 (0)441 950 64 119 www.hinrichs-stapler.de

Kalmar DRD450-60C5

Capacity: 45000 kg
Year: 1996
Hours: 13065
Engine: Volvo TWD1031ME
Boom: Teleskop
Lift height: 14700 mm
Build height: 4500 mm

Commission Nr.: D4052
Tires front: 4 x Pneumatic tires (60 - 80%)
Tires rear: 2 x Pneumatic tires (40 - 60%)
Ont. condition: good
Technical condition: good

Rental Rates:



Add. equipment and attachments:

Piggy Back for trailer handling we can dismantle, machine has 4.000 kg more capacity
3rd valve,

Video:

www.youtube.com/embed//YNf3Mjzqzpl

Lift height number of containers:

5

Capacity 1st row:

45000 kg

Capacity 2nd row:

23000 kg

Capacity 3rd row:

8000 kg

BANKEN: KSK Syke
DLB Oldenburg
Deutsche Bank Bremen

BLZ 291 517 00
BLZ 280 200 50
BLZ 290 700 50

KTO-Nr: 113 00 11 77 6
KTO-Nr: 130 00 211 00
KTO-Nr: 45 11 119 00

IBAN DE 66 291 517 00 113 00 11 77 6
IBAN DE 58 280 200 50 130 00 211 00
IBAN DE 75 290 700 50 045 11 119 00

SWIFT-BIC: BRLADE215yk
SWIFT-BIC: OLBODE H2
SWIFT-BIC: DEUTDE33XXX