

[Hinrichs Flurfördergeräte · Fuldastraße 32 · 26135 Oldenburg](#)

Fuldastraße 32 • 26135 Oldenburg, Germany

Telefon +49 (0)441 950 64 110 info@hinrichs-stapler.de

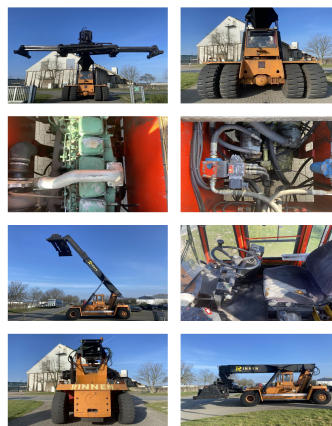
Telefax +49 (0)441 950 64 119 www.hinrichs-stapler.de

Kalmar DC4560RC4

Capacity: 45000 kg
Year: 1992
Hours: 25000
Engine: 6 Cyl. Volvo TD100G
Boom: Teleskop
Lift height: 12200 mm
Build height: 4580 mm

Commission Nr.: D4038
Tires front: 4 x Pneumatic tires
Tires rear: 2 x Pneumatic tires
Ont. condition: good

Rental Rates: per day:
Week
month



Add. equipment and attachments: Side Shift,

movable cabin

Video:

www.youtube.com/embed//zgHi7fqcGco

Lift height number of containers: 4

Capacity 1st row: 45000 kg

Capacity 2nd row: 25000 kg

Capacity 3rd row: 12000 kg

BANKEN: KSK Syke
OLB Oldenburg
Deutsche Bank Bremen

BLZ 291 517 00
BLZ 280 200 50
BLZ 290 700 50

KTO-Nr: 113 00 11 77 6
KTO-Nr: 130 00 211 00
KTO-Nr: 45 11 119 00

IBAN DE 66 291 517 00 113 00 11 77 6
IBAN DE 38 280 200 50 130 00 211 00
IBAN DE 75 290 700 50 045 11 119 00

SWIFT-BIC BRLADE215yk
SWIFT-BIC OLBODE H2
SWIFT-BIC DEUTDEH3XXX