

Hinrichs Flurfördergeräte · Fuldastraße 32 · 26135 Oldenburg

Fuldastraße 32 · 26135 Oldenburg, Germany

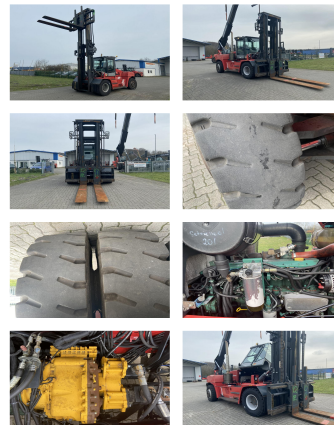
Telefon +49 (0)441 950 64 110 [info@hinrichs-stapler.de](mailto:info@hinrichs-stapler.de)

Telefax +49 (0)441 950 64 119 [www.hinrichs-stapler.de](http://www.hinrichs-stapler.de)

## Kalmar DCE150-12

**Capacity:** 15000 kg  
**Year:** 2011  
**Hours:** 50792  
**Engine:** 6 Cyl. Volvo TAD660VE  
**Boom:** Standard  
**Lift height:** 5000 mm  
**Build height:** 4200 mm

**Commission Nr.:** D4027  
**Forks:** 2400 x 350 mm  
**Tires front:** 4 x Pneumatic tires (40 - 60%)  
**Tires rear:** 2 x Pneumatic tires (40 - 60%)  
**Opt. condition:** good  
**Techn. condition:** good  
**Price:** **0 EUR**



**Add. equipment and attachments:**

Side Shift, Fork positioners,  
Diesel particle filter, Full cabin,

**Video:**

[www.youtube.com/embed//FlswLPiaHS8](http://www.youtube.com/embed//FlswLPiaHS8)

**BANKEN:** KSK Syke  
OLB Oldenburg  
Deutsche Bank Bremen

BLZ 291 517 00  
BLZ 280 200 50  
BLZ 290 700 50

KTO-Nr. 113 00 11 77 6  
KTO-Nr. 130 00 211 00  
KTO-Nr. 45 11 119 00

IBAN DE 66 291 517 00 113 00 11 77 6  
IBAN DE 58 280 200 50 130 00 211 00  
IBAN DE 75 290 700 50 045 11 119 00

SWIFT-BIC BRLADE21Syk  
SWIFT-BIC OLBODE H2  
SWIFT-BIC DEUTDE33XXX