

Hinrichs Flurfördergeräte • Fuldastraße 32 • 26135 Oldenburg

Fuldastraße 32 • 26135 Oldenburg, Germany

Telefon +49 (0)441 950 64 110 info@hinrichs-stapler.de

Telefax +49 (0)441 950 64 119 www.hinrichs-stapler.de

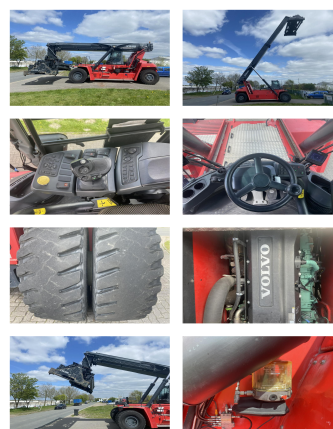
## Kalmar DRG450-60C5

**Capacity:** 45000 kg  
**Year:** 2017  
**Hours:** 16000  
**Engine:** 6 Cyl. Volvo TAD1171VE  
**Boom:** Teleskop  
**Lift height:** 15200 mm  
**Build height:** 4700 mm

**Commission Nr.:** D4010  
**Tires front:** 4 x Pneumatic tires (40 - 60%)  
**Tires rear:** 2 x Pneumatic tires (40 - 60%)

**Ont. condition:** good  
**Technical condition:** good

## Rental Rates:



**Add. equipment and attachments:**

Side Shift,  
Heater, Full cabin, Air conditioning,

Piggy Back movable cabin central lubrication pile slope Camera  
Tamtron scale

**Description:**

**Video:**

[www.youtube.com/embed//UitK0q2GFAI](http://www.youtube.com/embed//UitK0q2GFAI)

**Lift height number of containers:** 5  
**Capacity 1st row:** 45000 kg  
**Capacity 2nd row:** 25000 kg  
**Capacity 3rd row:** 12000 kg

**BANKEN:** KSK Syke  
OLB Oldenburg  
Deutsche Bank Bremen

BLZ 291 517 00  
BLZ 280 200 50  
BLZ 290 700 50

KTO-Nr. 113 00 11 77 6  
KTO-Nr. 130 00 211 00  
KTO-Nr. 45 11 119 00

IBAN DE 66 291 517 00 113 00 11 77 6  
IBAN DE 38 280 200 50 130 00 211 00  
IBAN DE 75 290 700 50 045 11 119 00

SWIFT-BIC BRLADE21Syk  
SWIFT-BIC OLBODE H2  
SWIFT-BIC DEUTDEH3XXX